

2009
DSBPRODUCT
PHOTO LAMINATOR



DSB

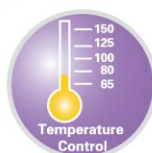
PHOTO LAMINATOR
DSB PRODUCT

330-ARP

High speed Photo Laminator A3



| model | DSB 330-ARP |
|---------------------------|--------------------------|
| Heating system | Hot shoe + heating plate |
| Roller Q ^{ty} | 4 |
| Laminating type | Cold & hot laminating |
| Laminating speed | 800 mm/min |
| Laminating thickness | 1mm |
| File size | Up to A3 |
| Max. entrance width | 330mm |
| Warm up time | 3 min |
| Available pouch thickness | 75~250 mic |



Micro constant temperature design for economizing on electric power, and heating system with international patents, that's the ideal choice for long term using. Suitable for professional users and commercial office. Environmentally-friendly and not harmful to humans.



When it comes to the debate of green technology and performance, GS certified DSB 330-ARP gives the best proof for it. Micro constant temperature control is successful used for economizing power consumption. Standby mode offers the function of minimizing voltage, preserving temperature and give rapid re-warm up for re-using. Multi-national patented heating system allows constant long term working, ultra quick warm up and excellent laminating speed no matter for different thickness of laminating film. Built by environmental-friendly materials without hazard substance is just the basic of design. Enjoying the unpredicted experience, now is the right time.



SOGOOD-120S



| | |
|---------------------------|------------------------|
| Heating system | Hot shoe |
| Roller Q'ty | 4 |
| Laminating width | 120mm |
| Photo laminating | Yes |
| Max. laminating Thickness | 1mm |
| Pouch film acceptability | 75-250Mic. |
| Weight | 2.45 kgs |
| Machine Dimension | 250*145*100 mm (BxDxH) |

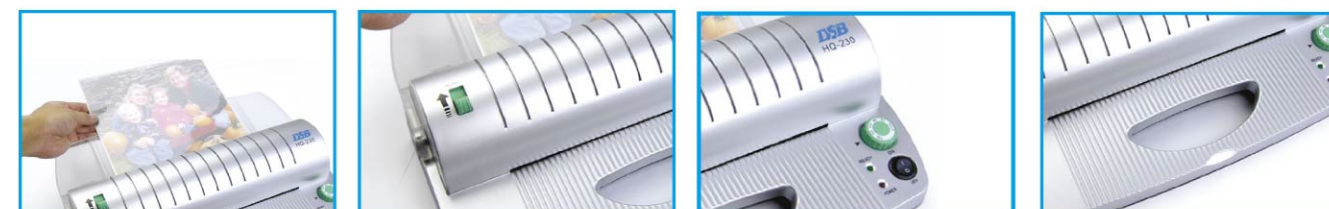


HQ-120S/230S/330S



HQ-330S HQ-230S HQ-120S

| Model | HQ-120S | HQ-230S | HQ-330S |
|---------------------------|-----------------------|------------------------|------------------------|
| Laminating type | Cold & hot laminating | Cold & hot laminating | Cold & hot laminating |
| Laminating speed | 250mm/min | 250mm/min | 250mm/min |
| Laminating thickness | 0.4mm | 0.4mm | 0.4mm |
| File size | Up to A4 | Up to A4 | Up to A3 |
| Max. entrance width | 238mm | 238mm | 338mm |
| Hot rolls | 2 | 2 | 2 |
| Available pouch thickness | 80/100/125mic | 80/100/125mic | 80/100/125mic |
| Weight | | 1.5 kgs | 2 kgs |
| Machine Dimension | mm (BxDxH) | 378*206*103 mm (BxDxH) | 475*190*110 mm (BxDxH) |



Paper support Release switch Available for hot & cold laminating Portable design

SOGOOD-230S



| | |
|---------------------------|-----------------------|
| Heating system | Hot shoe |
| Roller Q'ty | 4 |
| Laminating width | 230mm |
| Photo laminating | Yes |
| Max. laminating Thickness | 1mm |
| Pouch film acceptability | 75-250Mic. |
| Weight | 3.4 kgs |
| Machine Dimension | 360*160*105mm (BxDxH) |



SOGOOD-330S



| | |
|---------------------------|------------------------|
| Heating system | Hot shoe |
| Roller Q'ty | 4 |
| Laminating width | 330mm |
| Photo laminating | Yes |
| Max. laminating Thickness | 1mm |
| Pouch film acceptability | 75-250Mic. |
| Weight | 4.9 kgs |
| Machine Dimension | 470*210*125 mm (BxDxH) |



HQ-232



| | |
|---------------------------|-----------------------|
| Model | HQ-232 |
| Laminating type | Cold & hot laminating |
| Laminating speed | 250mm/min |
| Laminating thickness | 0.4mm |
| File size | Up to A4 |
| Max. entrance width | 238mm |
| Hot rolls | 2 |
| Available pouch thickness | 80/100/125mic |
| Weight | 1.37 kgs |
| Machine Dimension | 350*170*90 mm (BxDxH) |

